

THIS DOCUMENT AND THE DATA DISCLOSED HEREIN OR HEREWITH IS PROPERTY OF AND BELONGS TO ACR ELECTRONICS, INC. FT LAUDERDALE FL. IT IS FURNISHED IN CONFIDENCE. SOLELY FOR INFORMATIONAL PURPOSES. IT IS NOT TO BE REPRODUCED, USED OR DISCLOSED IN WHOLE OR IN PART TO ANYONE WITHOUT THE PERMISSION OF ACR ELECTRONICS, INC.

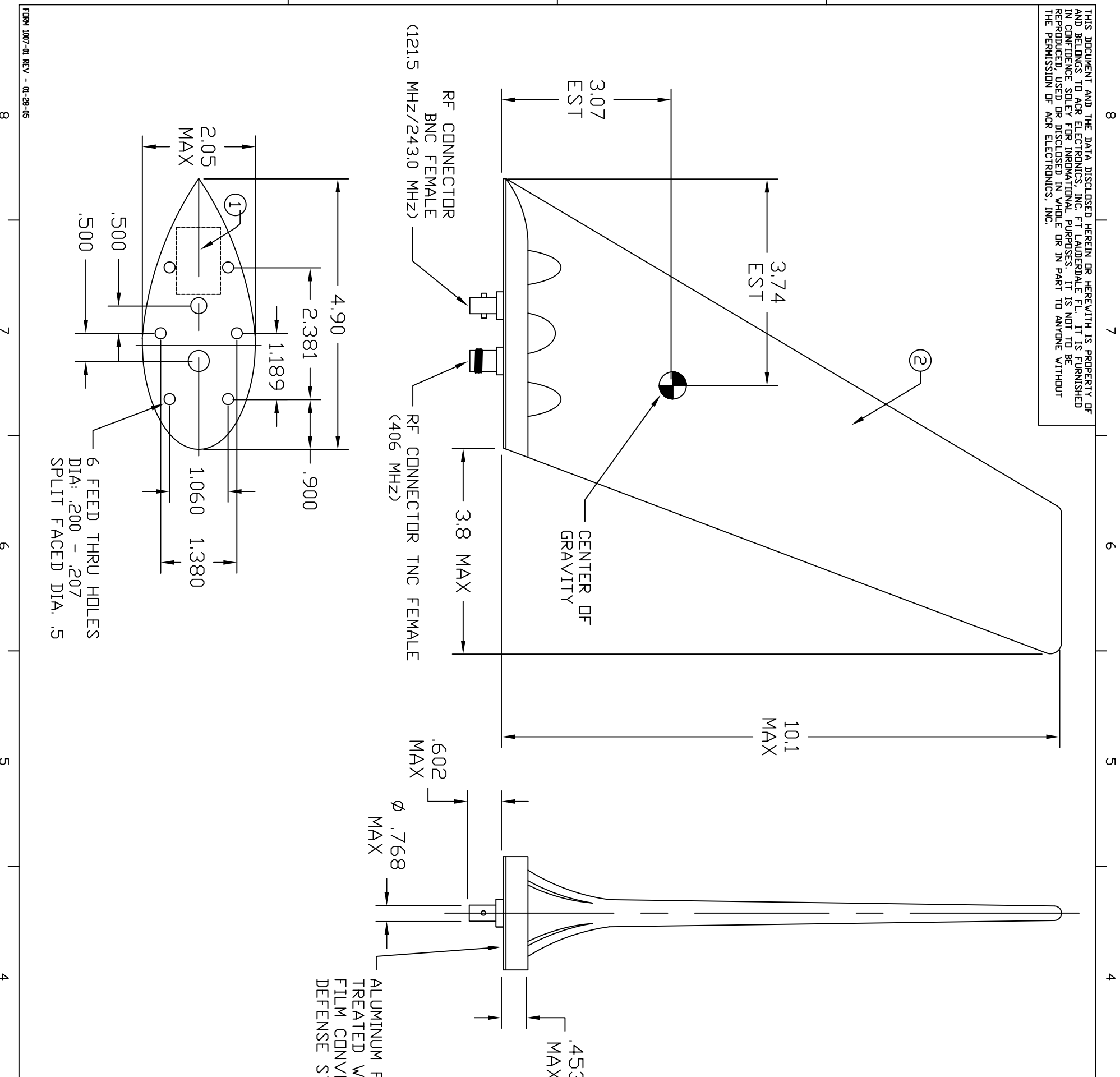
DATE	SYM	REVISION RECORD	AUTH	DR
06-11-10	-	DCA W9758	LF	BL
09-30-10	-	DCA W10287	LF	LG
09-28-11	A	ECD 14818	ME	CW

NOTES:

1. WEIGHT: .64 LBS MIN - .88 LBS MAX.
2. FINISH: WHITE EPOXY TO DEFENSE STANDARD 80-161.
3. FREQUENCIES: 121.5 MHZ, 243.0MHZ AND 406 MHZ
4. NOMINAL IMPEDANCE: 50 OHMS
5. POLARIZATION: VERTICAL
6. RADIATION PATTERN: OMNIDIRECTIONAL
7. VSWR: 2.0 : 1 OR BETTER @ 121.5/243.0 MHZ
1.5 : 1 OR BETTER @ 406MHZ
8. MATING CONNECTOR: BNC AND TNC SERIES
9. THE COMPASS SAFE DISTANCE FOR THIS EQUIPMENT IS LESS THAN 11.8 INCHES.
10. APPLY LABEL (ITEM 1) OVER MANUFACTURER'S ID PLATE. ENSURE THE SERIAL NUMBER ON THE LABEL MATCHES THE MANUFACTURER'S SERIAL NUMBER.

INSTALLATION NOTES:

1. TORQUE 25-26 IN/LBS. ON MOUNTING FASTENERS DURING INSTALLATION.
2. PROVIDE A .625" DIAMETER HOLE FOR THE BNC CONNECTOR AND FOR THE TNC CONNECTOR.
3. A LAYER OF ANTI-CORROSION BONDING GREASE SHOULD BE APPLIED BETWEEN THE AIRCRAFT AND THE BASE OF THE ANTENNA.
4. MOUNT ANTENNA USING 100° COUNTERSUNK HEAD #10 SS MACHINE SCREWS AND ASSOCIATED HARDWARE.
5. GASKET IS NOT SUPPLIED AND USE IS OPTIONAL. CONTACT ACR/ARTEX AND REQUEST PART #183-1622 IF ONE IS DESIRED.



ALUMINUM FACE UNPAINTED.
TREATED WITH CHROMATE
FILM CONVERSION TO
DEFENSE STANDARD 03-18.

ITEM	QTY	PART NUMBER	DESCRIPTION
2	1	870-1622	CHELTON 16-22-406
1	1	591-0333	LABEL, 16-22-406 ANTENNA

LIST OF MATERIALS OR PARTS LIST

DRG. DR. BY:	R. JUDSON
DRG. DATE:	05-14-98
ENG.	D. FREISEN
APVD:	D. QUIRINS
ACR ELECTRONICS INC 5757 RAVENSWOOD RD. FT. LAUDERDALE FL 33312	
ANTENNA, TRI-BAND BLADE, WHITE	

UNLESS OTHERWISE SPECIFIED	XX ±.03	SIZE	DRAWING NUMBER:	110-333	REV.	A
TOLERANCES ARE:	.XXX ±.010	SCALE:	CAGE CODE	60253	SHEET 1 OF 1	
UNLESS OTHERWISE SPECIFIED	XX ±.1	SCALE:	NONE			
DIMENSIONS ARE IN INCHES & PER ASME Y14.5M						