

4

3

60253 DWG. NO. 110-343

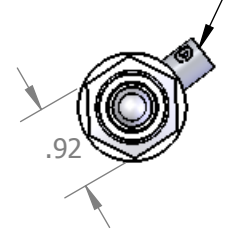
SHT 1 REV B

1

THIS DOCUMENT AND THE DATA DISCLOSED HEREIN OR HEREWITH IS PROPERTY OF AND BELONGS TO ACR ELECTRONICS, INC. FT LAUDERDALE, FL. IT IS FURNISHED IN CONFIDENCE SOLELY FOR INFORMATIONAL PURPOSES. IT IS NOT TO BE REPRODUCED, USED OR DISCLOSED IN WHOLE OR IN PART TO ANYONE WITHOUT THE PERMISSION OF ACR.

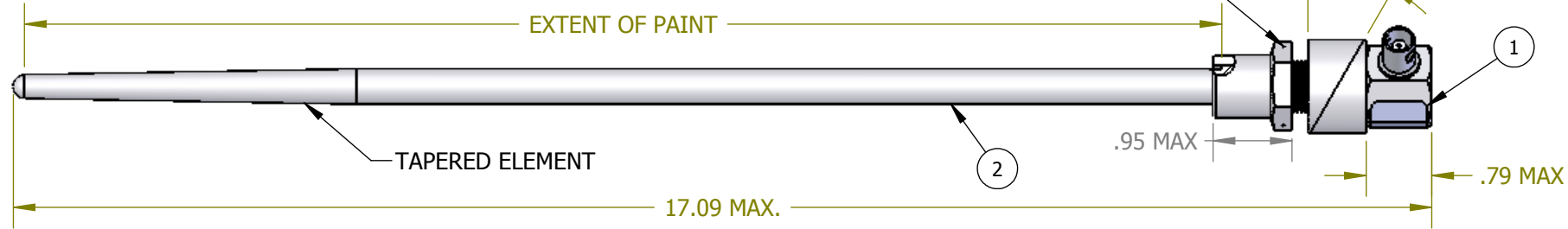
REVISIONS				
REV	DESCRIPTION	DATE	APPROVED	
-	DCN 1714	6-6-01	DQ	
-	DCN 2534	1-31-05	WN	
-	DCN 2551	3-7-05	DQ	
A	ECO 14818	9-28-11	ME	
B	ECO 15153 ADD ITEMS 3 & 4 SHIPPING NOTE	8/20/12	FJ	

RF FEMALE BNC CONNECTOR
121.5, 243.0, 406 MHz



WIRE LOCKING HOLES

33.00° ±1°



B

B

INSTALLATION NOTES:

1. ANTENNA CAN BE MOUNTED VERTICALLY OR AT 33° ANGLE.
2. TORQUE TO 100 IN/LBS. MAX.
3. APPLY A BEAD OF SEALANT AROUND THE MOUNTING NUT.

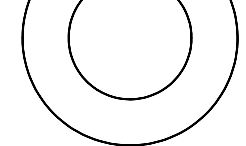
NOTES:

1. WEIGHT: .31 LBS. MAX.
2. FINISH: GLOSS WHITE EPOXY PAINT TO DEF STD. 80-161
3. FREQUENCIES: 121.5, 243.0, 406 MHZ.
4. NORMAL IMPEDANCE: 50 OHMS.
5. POLARIZATION: VERTICAL.
6. RADIATION PATTERN: OMNIDIRECTIONAL.
7. VSWR: 2.50 : 1 OR LESS @ 121.5/243.0 MHZ
1.50 : 1 OR LESS @ 406 MHZ
8. MATING CONNECTOR: FEMALE BNC
9. TEMPERATURE SPECIFICATION: STORAGE -55°C TO +85°C
OPERATING -20°C TO +55°C
10. BODY, SPACERS, NUT: ALUMINUM ALLOY WITH PROTECTIVE TREATMENT CHROMATE FILM CONVERSION TO DEF. STAND. 03-18.
>= 2 dBi AT CARDINAL FREQUENCIES.
11. COMPASS SAFE DISTANCE: <11.81"
12. APPLY LABEL (ITEM 1) AS SHOWN. DO NOT COVER SERIAL NUMBER WITH LABEL.

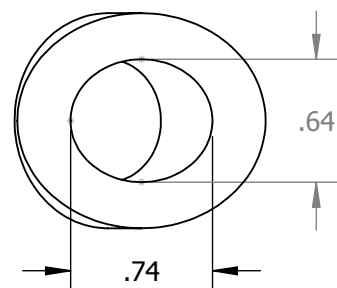
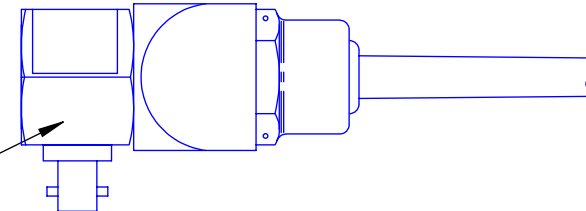
SHIPPING INSTRUCTIONS

1. WRAP IN BUBBLE WRAP (ITEM 3) AND PLACE IN SHIPPING BOX (ITEM 4) ENSURING A TIGHT FIT.

∅.64
CLEARANCE HOLE
VERTICAL INSTALLATION



SERIAL NUMBER

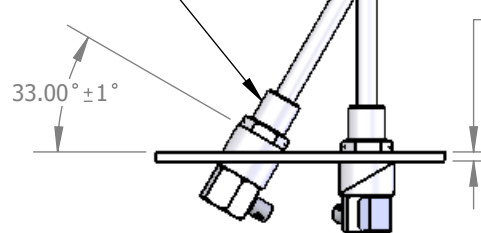


CLEARANCE HOLE
33° INSTALLATION

A

A

MOUNTING NUT



.19 MAX.
AIRCRAFT SKIN:
DOUBLER PLATE TO
BE USED AS NECESSARY

LIST OF MATERIALS OR PARTS LIST

ITEM NO.	PART NUMBER	DESCRIPTION	QTY.
1	591-2141	LABEL, ANTENNA TRI BAND WHIP 110-343	1
2	870-2141	ANTENNA, TRI-BAND WHIP (21-41)	1
3	A2-02-0036-2	BUBBLE WRAP	A/R
4	A1-26-0611	SHIPPING BOX	1

UNLESS OTHERWISE SPECIFIED:
ALL ANGLES ARE 90°

TOLERANCES ON

MILLIMETER	FRACTIONS	DECIMALS	ANGLES
X. ±.25		.XX ±.030	X ± 5°
X.X ±.125	±1/64	.XXX ±.010	.X ± 2°
X.XX ±.006		.XXXX ±.005	.XX ± 1°
			.XXX ± 1/2°
			IMPLIED: ±1°

ANSI-B SOLIDWORKS

DRAWN	LF	9-18-00
CHECKED	-	-
ENG.	DF	9-18-00
APVD.	DQ	9-19-00

- ⬡ DENOTES REVISION CHANGE
- ⊕ DENOTES DIMENSION PLUS DRAFT ANGLE
- ⊖ DENOTES DIMENSION MINUS DRAFT ANGLE
- (XX) DENOTES REFERENCE NOTE OR DIMENSION
- (XX) DENOTES CRITICAL INSPECTION DIMENSIONS

ACR ELECTRONICS, INC

5757 RAVENSWOOD RD. FT. LAUDERDALE FL 33312

ANTENNA, TRI BAND WHIP 21-41

SIZE	CODE IDENT. NO.	DRAWING NO.	REV
B	18560	110-343	B

SCALE 1:4 SHEET 1 OF 1

4

3

2

1