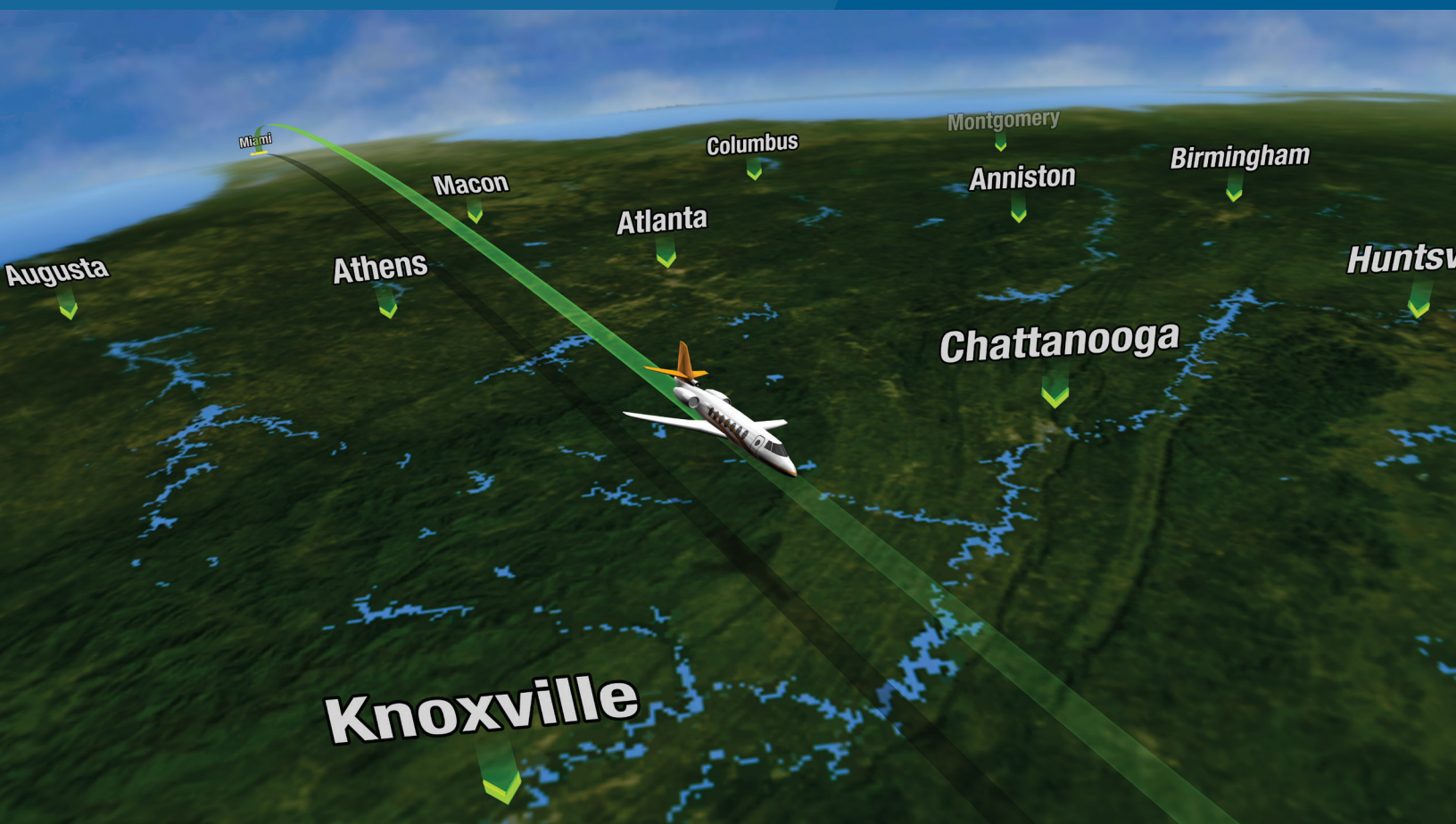


Airshow® 500 moving maps



Bringing 3D moving-map capability to light business aircraft.

Airshow® 500 is the first 3D moving map system designed and priced for light business jets. Airshow 500 comes fully loaded with worldwide maps that utilize NASA's Blue Marble map data and many other features as standard upon delivery, including passenger-selectable languages and settings adjustable anytime, anywhere.

The system has two installation options, flange or tray mount, and is lighter and more advanced than the Airshow 410 system it is designed to replace. The tray mount can be dropped in to replace an existing Airshow 410. The Airshow 500 supports SD-SDI, VGA and NTSC video output for display on a wide variety of legacy and modern monitors.

With Airshow 500, your system is "fly-away" ready, with popular features such as languages and worldwide maps included. The settings editor provides on-aircraft control of the frequently customized aspects of the moving map to support unique preferences with no need for custom loadable software.

KEY FEATURES

- ▶ Widescreen, digital SD-SDI output as well as analog NTSC for integration with any cabin management system's displays
- ▶ Worldwide map set with a variety of 2D and 3D views
- ▶ 3D Relative Location Indicator
- ▶ "Fasten Seat Belt" and "No Smoking" briefings
- ▶ Flange or tray mount installation option
- ▶ Supports data for Airshow app for Apple® iPad® devices (optional charge)

- ▶ Settings editor controls:
 - Aircraft type selection
 - 16:9 or 4:3 aspect ratio monitor display
 - Geographic borders on/off
 - Select information parameters to display
 - Units of measure and time format
 - Logo and graphics selection
 - Language display of place names and information parameters
 - Six installed language options (English, French, German, Spanish, Arabic and simplified Chinese)
- ▶ Additional customized options for separate purchase, including paint scheme, audio briefings, custom map place names and additional languages

**Rockwell
Collins**

Building trust every day

Airshow 500 is available with two mounting options, flange and tray mount, to meet any aircraft installation requirement.

| | Flange mount | Tray mount |
|------------------------|-------------------|--------------------|
| Dimensions (in.) | 3.3 x 7.3 x 10.08 | 3.56 x 7.8 x 14.28 |
| Weight (lb.) | 4.7 | 5.9 |
| Power (watts, nominal) | 36.4 | 36.4 |
| Connectors | D-Sub | ARINC 404 |
| Video output | NTSC/SD-SDI/VGA | NTSC/SD-SDI/VGA |

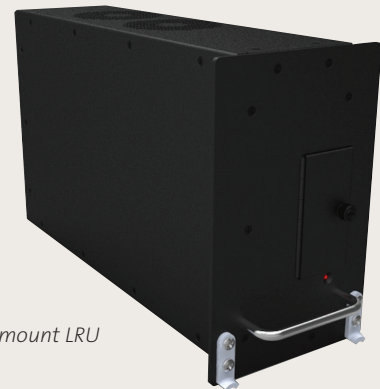
THE FIRST. THE LATEST. ALL FROM ROCKWELL COLLINS.

In 1982, Airshow made its debut as the first moving-map system for an aircraft cabin. More than three decades later, Rockwell Collins continues to deliver Airshow products that lead in innovation, quality and reliability.

Today, Airshow 500 delivers the first 3D moving map system designed and priced for the light business jet.



Flange mount LRU



Tray mount LRU

Building trust every day.

Rockwell Collins delivers smart communication and aviation electronic solutions to customers worldwide. Backed by a global network of service and support, we stand committed to putting technology and practical innovation to work for you whenever and wherever you need us. In this way, working together, we build trust. Every day.

For more information, contact:

Rockwell Collins
400 Collins Road NE
Cedar Rapids, IA 52498
+1.319.295.4085
email: csmarketing@rockwellcollins.com
www.rockwellcollins.com